

AGENDA

Regular Drainage Meeting

Wednesday, July 20, 2022, 9:30 A.M.

This meeting will be held electronically and in-person.

To access the meeting call: 1-(312)-626-6799, when prompted enter meeting

ID code: 820 7567 2007

You can also access the meeting online at:

<https://us02web.zoom.us/j/82075672007>

1. Open Meeting
2. Approve Agenda
3. Approve Claims For Payment

Documents:

[PAYABLES-DRAINAGE PUBLICATION 7-22-22.PDF](#)

4. DD 11 WO 331 - Discuss W Possible Action - Investigation Results

Documents:

[DD11 INVESTIGATION RESULTS.PDF](#)

5. DD Big 4 Main - Discuss W Possible Action - Open Ditch Brush Spraying
6. Discuss W Possible Action - New Work Order Requests
7. Other Business
8. Adjourn Meeting

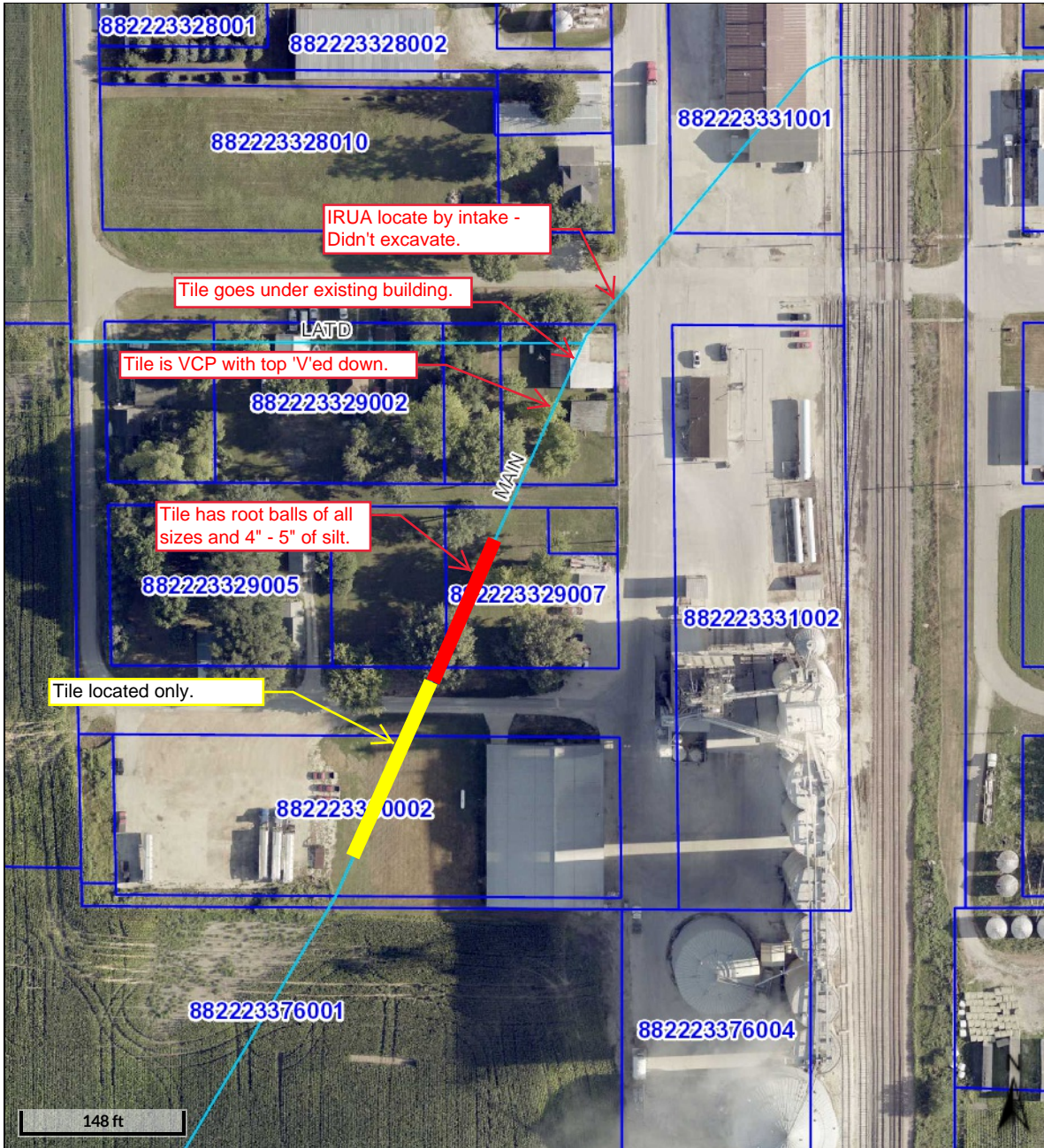


Hardin County

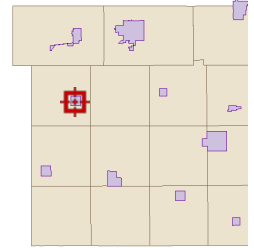
Drainage Claims with Pay Date of 7/22/2022

Description	Vendor	Amount
DD 34 observation of repair of tile blow out	Clapsaddle-Garber Assoc	710.40
DD 52 Compiling repair report of sinkhole/cctv	Clapsaddle-Garber Assoc	859.10
DD 14 Revisions to report/attendance of meeting	Clapsaddle-Garber Assoc	4,118.10
Work on reclassification of main open ditch	Clapsaddle-Garber Assoc	4,920.60
DD 56 Construction observation and contract admin	Clapsaddle-Garber Assoc	22,615.80
DD 121 work on as-builts	Clapsaddle-Garber Assoc	616.65
DD 121 Observe sinkhole	Clapsaddle-Garber Assoc	618.10

Total Regular Payables: 1,569.50
Total Stamped Warrants: 32,889.25



Overview



Legend

-  Corporate Limits
-  Political Township
-  Parcels
-  Drainage Tiles

Disclaimer: The maps included in this website do not represent a survey and are compiled from official records, including plats, surveys, recorded deeds, and contracts, and only contain information required for government purposes. No warranties, expressed or implied, are provided for the data herein, its use or its interpretation. Hardin County assumes no responsibility for use or interpretation of the data. Any person that relies on any information obtained from this site does so at his or her own risk. All critical information should be independently verified.

Date created: 7/20/2022

Last Data Uploaded: 7/19/2022 10:49:50 PM

Developed by  **Schneider**
GEOSPATIAL

DD #11

WO #331